

FARE STRUCTURE

		Seniors 60+ Person with Disabilites	General Public
All fares are for a one-way ride except for the Eagle Eye Phelps #1 Route			
Zone 1	5-mile radius	\$2.00	\$3.25
Zone 2	6-15 mile radius	\$2.75	\$3.75
	<i>Eagle River - St. Germain Conover- Eagle River St. Germain - Minocqua</i>		
Zone 3	16-22 mile radius	\$4.00	\$5.75
	<i>Phelps - Land O' Lakes</i>		
Zone 4	22-38 miles radius	\$4.50	\$7.25
	<i>Lakeland-Rhineland Rhineland- Eagle River Eagle River- Lakeland</i>		
Zone 5	Over 38 miles	\$5.00	\$8.75
Eagle Eye Phelps #1 Round Trip		\$7.00	\$10.50

SAVE MONEY with a punch card!

Twenty \$1 punches (\$20 value) for only \$18.00 (no expiration date)

Purchase from our drivers or contact the transit office (see back)

Please plan ahead and bring small bills or checks made payable to Northwoods Transit Connections.

Oneida Vilas Transit Commission operates its programs and services without regard to race, color, national origin in accordance with Title VI of the Civil Rights Act and related nondiscrimination authorities. For more information on the Oneida Vilas Transit Commission's civil rights program, and the procedures to file a complaint, contact 1-844-267-4762

(for hearing impaired, please use Wisconsin Relay 711 service); email:

barb.newmannorthwoodstransit@outlook.com

RIDER RULES

We are excited for you to ride the bus with us! When riding, please follow these simple rules to ensure a safe & easy ride for yourself & other passengers.

1. Do not have distracting conversations with or distract the bus driver in any way.
2. Please have correct fare, punch card or monthly pass ready when boarding the bus.
3. Smoking cigarettes (including cigars & e-cigarettes) and/or drinking alcohol is not allowed on the bus. Pasengers under the influence of alcohol and/or illegal drugs will not be permitted to ride.
4. Animals are not allowed on the bus, except service animals.
5. Vulgar language, disruptive/dangerous behavior, and fighting are not allowed.
6. Drivers are only allowed to wait a maximum of 5 minutes after scheduled pick-up time for any passenger. Please be ready at the appropriate time.
7. Van (Little Joe) Riders Only: Riders seated in the front seat are required by WI State Law to wear a seat belt.
8. Do your part to keep the bus a pleasant & clean environment.
9. Turn off portable radio or tape/cd players or use headphones so the sound is limited to the individual user.
10. No personal errand stops are allowed. Once you leave the bus you will pay a new fare.

** Repeated or serious incidents of inappropriate behavior may lead to suspension/ revocation of riding privileges. **

Northwoods Transit Connections



ONEIDA-VILAS TRANSIT
COMMISSION

ROUTE SCHEDULE:

Eagle Eye Phelps #1
Every 1st and 3rd Wednesday



Providing independence through safe, affordable and reliable public transportation.

Connecting people and communities in Oneida and Vilas Counties.

Call us to schedule your ride today!

Office: 715-420-0585

Toll Free: 844-267-4762

www.northwoodstransit.org

PICK UP LOCATIONS:

- Phelps - Town Hall
- Eagle River - Vilas Food Pantry

PICK UP TIMES:

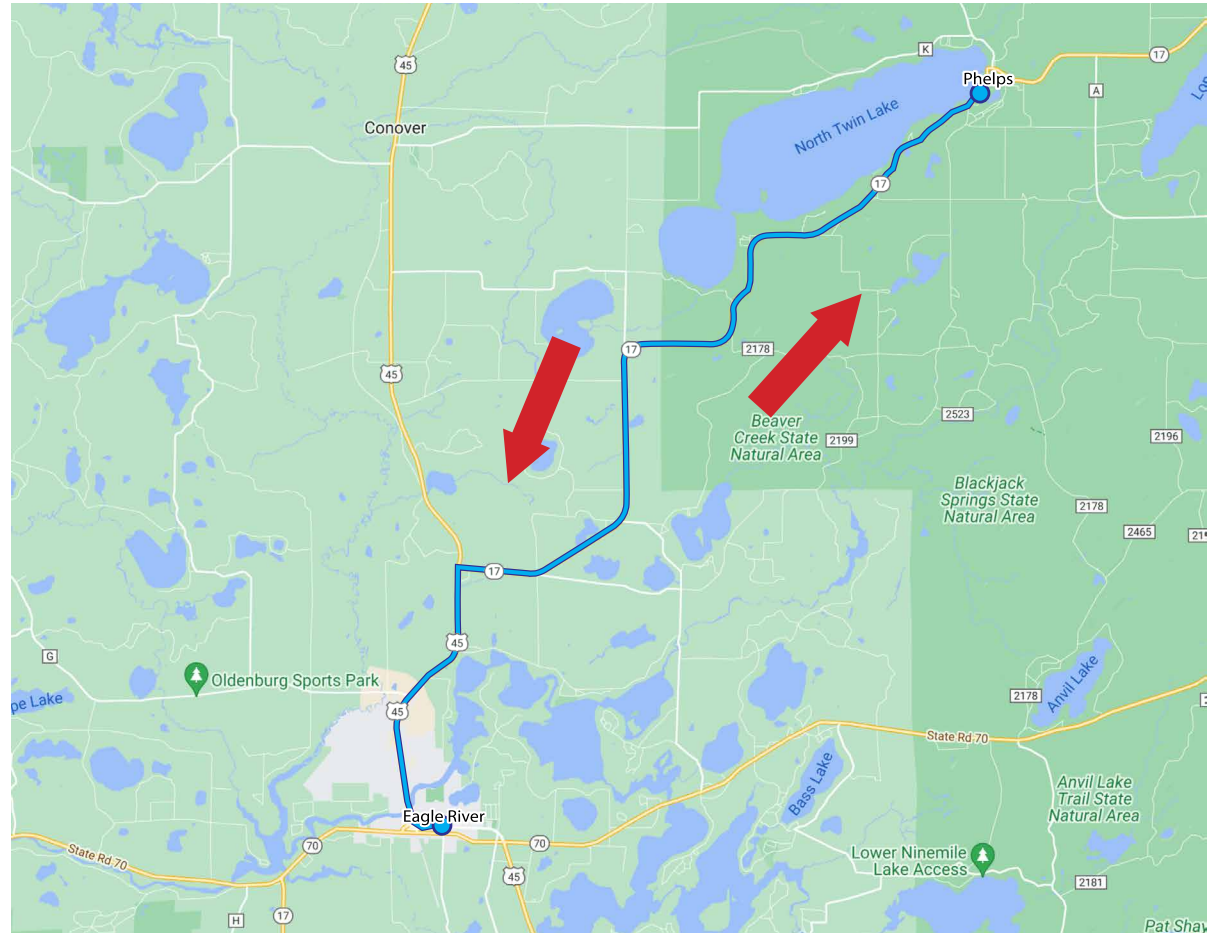
	<i>Pick Up</i>		<i>Destination</i>
8:00 AM	Phelps	to	Eagle River
11:00 AM	Eagle River	to	Phelps

No Service Holidays

New Year's Day
Memorial Day
Independence Day
Labor Day
Thanksgiving Day
Christmas Day

EAGLE EYE PHELPS #1

EVERY FIRST AND THIRD WEDNESDAY



Cities include: Eagle River & Phelps.

Please call for more information on municipal city limits.

Call 715-420-0585 for a pick-up.

Children 5 & under ride free!

(Must be accompanied by an adult.)

Northwoods Transit Connections • Office: 715-420-0585 • Toll Free: 844-267-4762

Effective Date: May 1, 2023